

# Aperture (f-stop)



## BRIGHTER

Allows MORE light in  
Shallow Depth of Field

BLURRED BACKGROUND

## DARKER

Allows LESS light in  
Great or Deep Depth of Field

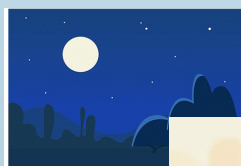
ALL IN FOCUS

## Definitions:

**Aperture:** Refers to the opening or hole of a lens through which light passes. Aperture controls the brightness of the image that passes through the lens and falls on the image sensor.

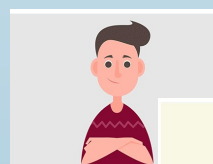
**f-stop:** It is expressed as an f-number (written as “f/” followed by a number), such as f/1.4, f/2, f/2.8, f/4, f/5.6, f/8, f/11, f/16, f/22, or f/32.

**Depth of Field:** (DoF) is the distance between the nearest and furthest elements in a scene that appear to be “acceptably sharp” in an image.



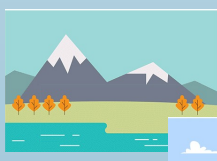
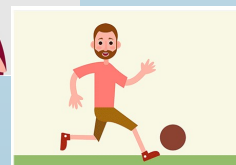
f/1.4

Low Light &  
Bokeh



f/2.8 - f/5.6

Portraits &  
Sports

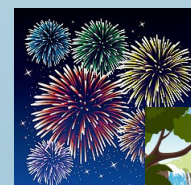


f/8—f/16

Landscapes



TRY!



f/16—f/32

Long

Exposures

