

Shutter Speed



Motion Blur demonstrated by differing shutter speeds

Definitions:

Shutter Speed: the length of time that the camera shutter is open to expose light into the camera sensor.

Motion Blur: the blur seen in moving objects in a photograph . It happens because objects move during the time it takes to expose the photo or the frame, and the movement gets recorded as a blur.

TRY!



1/4000
Very Fast
Moving Objects



1/2000 Cars Racing



1/1000 Fast Movement, Sports



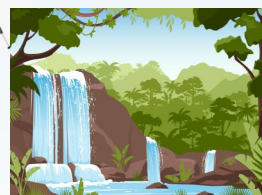
1/500 People
Running or Slow
Moving Sports



2" Long Exposure,
Fireworks



1/125 Everyday
Photos



1/30-1/2 Motion Blur on
Consistently Moving Objects,
Waterfalls, Rivers, Cities



5"-10" Light
Painting, Stars,
Milky Effect on
Moving Water



1/250 Children



1/60 Slowest Handheld
Setting for Sharp Images